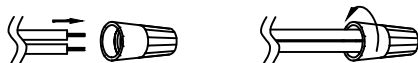


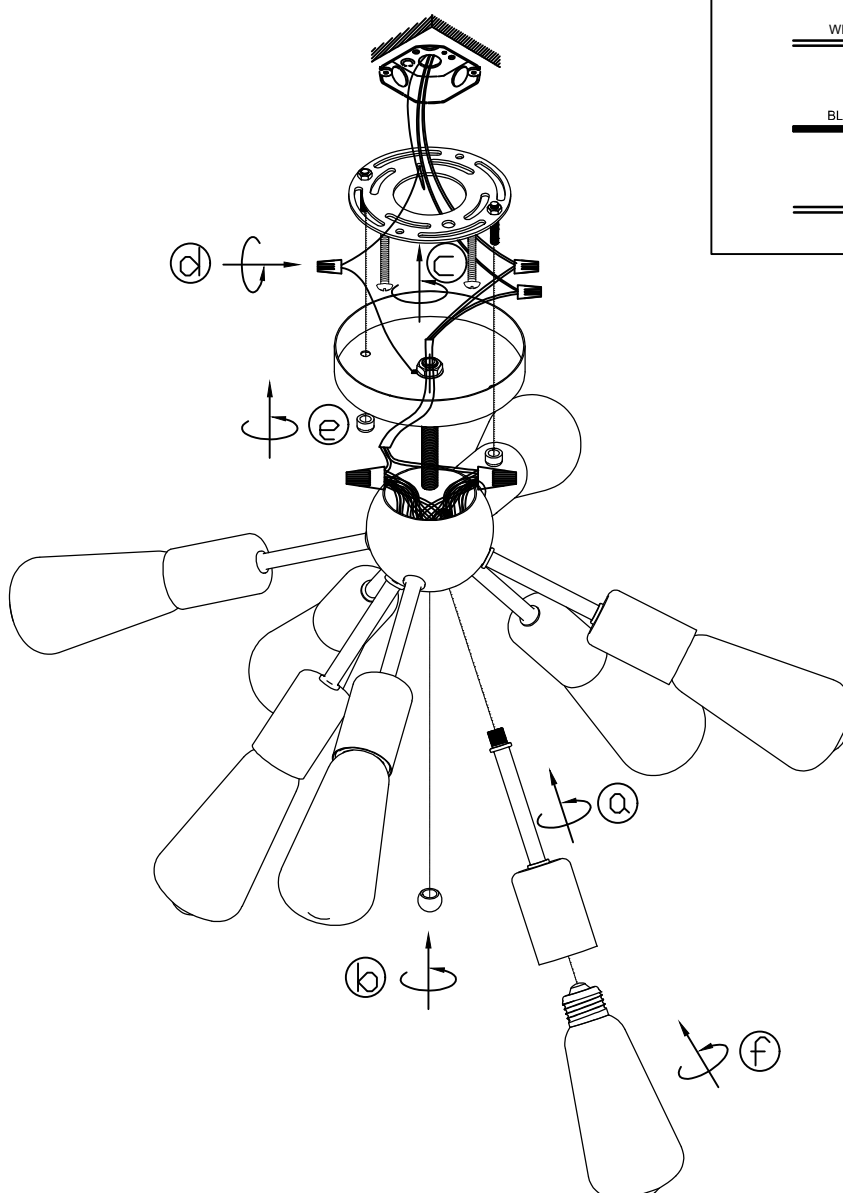
USER MANUAL

CAUTION

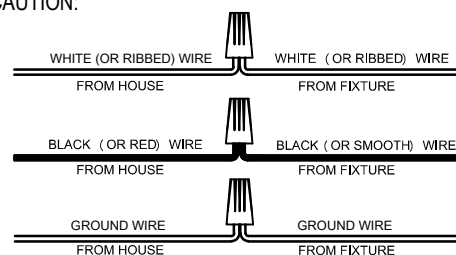
- 1) BE SURE THE ELECTRICITY TO THE WIRES YOU ARE WORKING ON IS SHUT OFF; EITHER THE FUSE IS REMOVED OR THE CIRCUIT BREAKER IS TURNED OFF. TURNING THE POWER OFF USING THE LIGHT SWITCH IS NOT SUFFICIENT TO PREVENT ELECTRICAL SHOCK.
- 2) DO NOT INSTALL OR USE THE LIGHT FIXTURE IF ANY PART IS MISSING OR DAMAGED. CONTACT YOUR DEALER FOR REPLACEMENT OR MISSING PARTS.
- 3) TO PROTECT THE FINISH, DO NOT USE CLEANSERS OR ABRASIVES DURING MAINTENANCE.
- 4) TO AVOID POSSIBLE FIRE OR ELECTRICAL SHOCK, MAKE SURE NO BARE WIRE STRANDS ARE EXPOSED OUTSIDE WIRE CONNECTORS.



INSTALLATION DIAGRAM



CAUTION:



SPECIFICATION

Input Voltage: 110~120V 50/60Hz

Wattage: E26 Max 60W per socket, bulb not included

Fixture Size: length in 22.05in (56cm) , width in 22.05in (56cm) , height in 11.81in (30cm) after bulb mounted

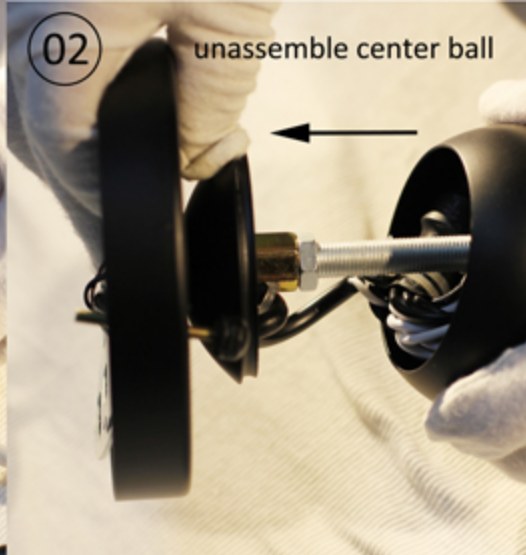
Thank you for shopping with us, please do not hesitate to contact us if you have any issue on product installation or application, please save this user manual as purchase proof and future reference.

www.mirrea.com

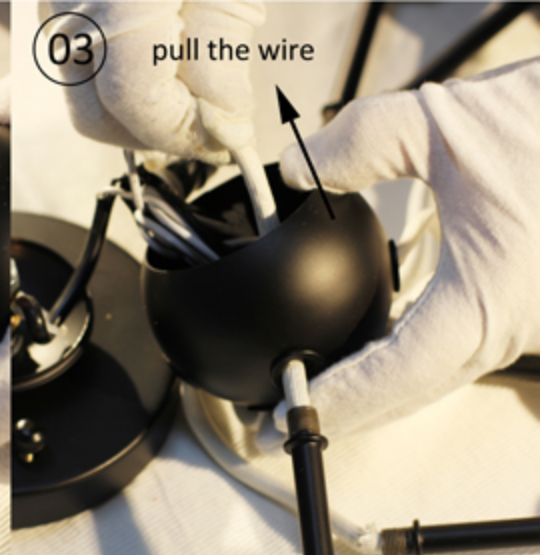
mirrea®



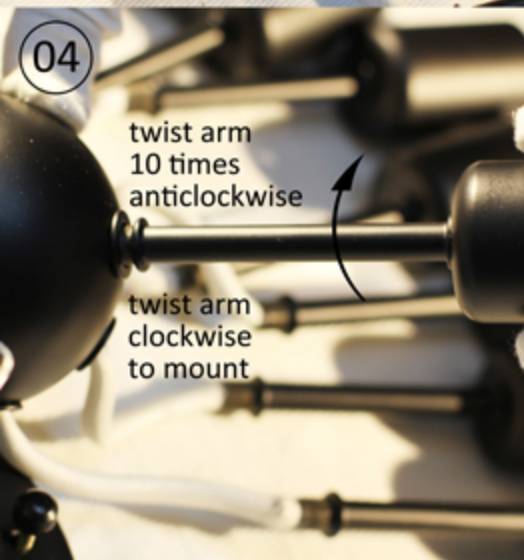
01 unscrew knob



02 unassemble center ball



03 pull the wire



04 twist arm
10 times
anticlockwise
twist arm
clockwise
to mount



05 insert wires
back into
center ball

two men's cooperation is better at this
step because the center ball is small.



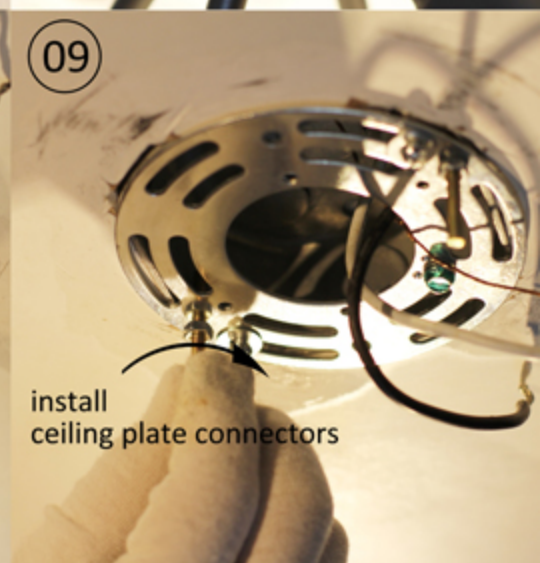
06 assemble
center ball



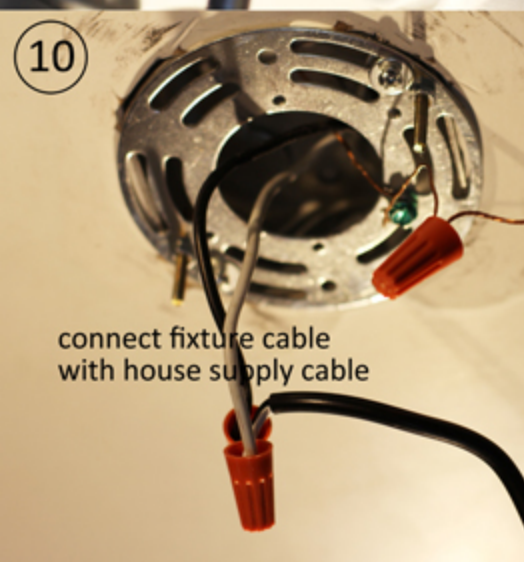
07 screw knob



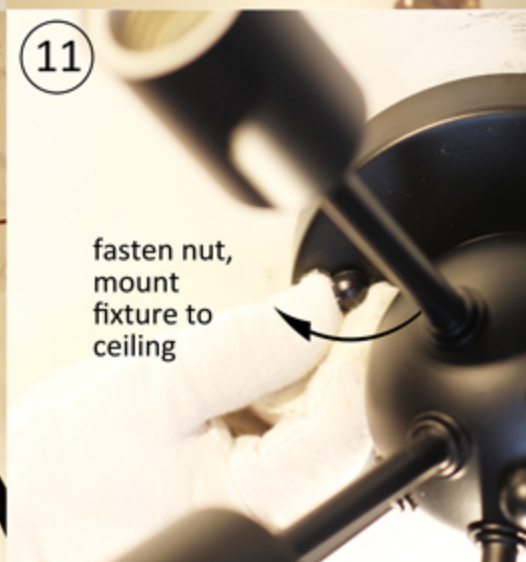
08 install
mounting bracket



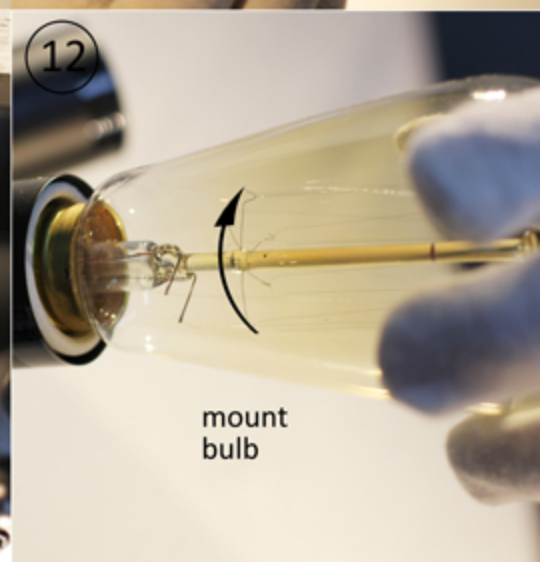
09 install
ceiling plate connectors



10 connect fixture cable
with house supply cable



11 fasten nut,
mount
fixture to
ceiling



12 mount
bulb